

INCORPORATING
PRODUCTS AWARDED
THE QUEENS AWARD
FOR ENTERPRISE:
INNOVATION
2004 & 2006



THE QUEEN'S AWARDS
FOR ENTERPRISE:
INNOVATION
2004 & 2006



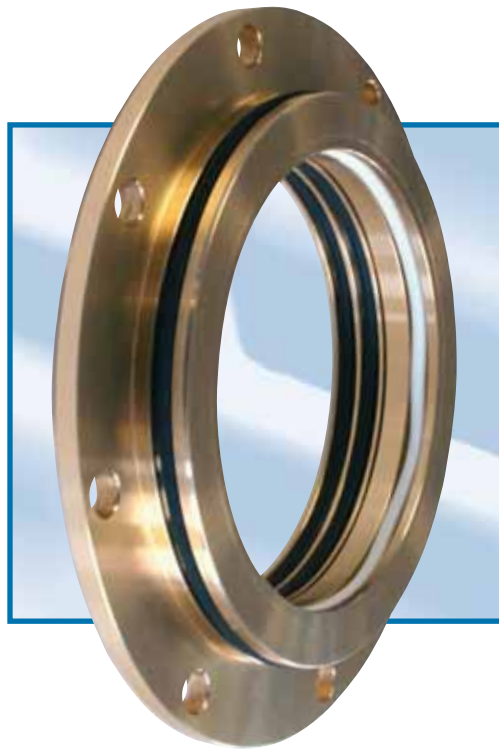
ENVIRONMENTAL TECHNOLOGY

reliability-focused-solutions.com

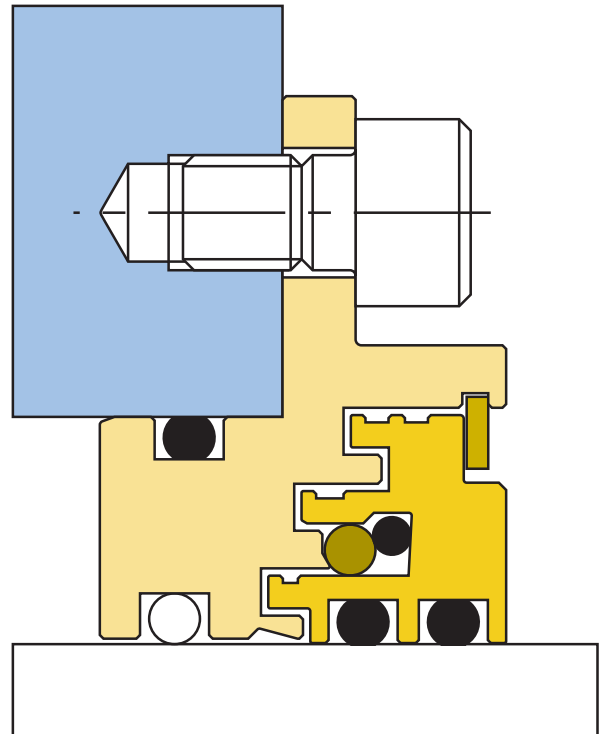
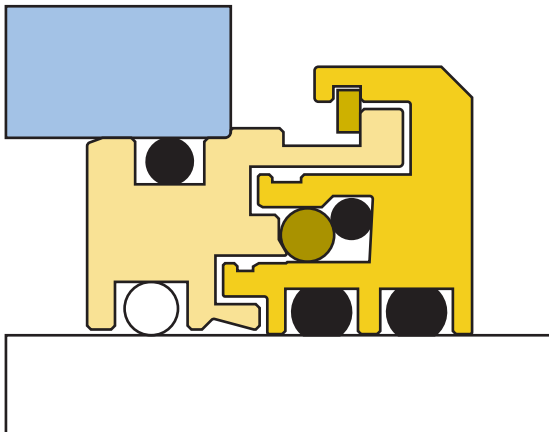
Reliability
Focused
Solutions



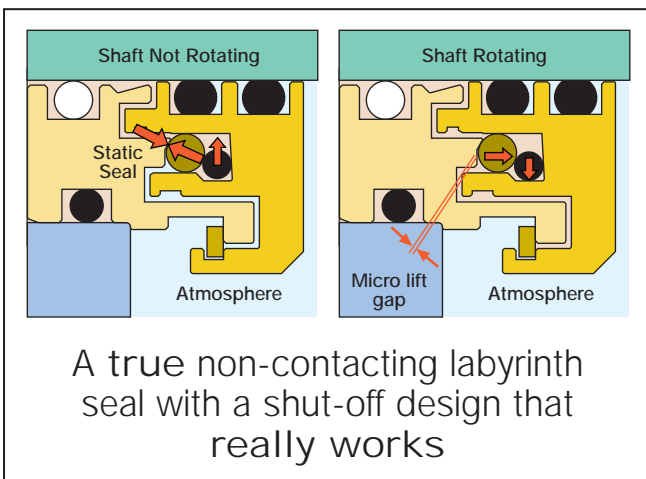
Bearing Protection to suit Warman® Pumps



Engineered to suit Warman® pumps



- Advanced labyrinth seal design
- Flange mounted and press fit designs available
- PTFE grease inhibitor band for superior egress protection
- Robust heavy duty design
- Shut-off valve to prevent bearing chamber breathing
- Proven to increase equipment reliability
- Full range of end covers and stub shafts also available



LabTecta™ integral moisture entry protection system.



LabTecta™ installed on equipment

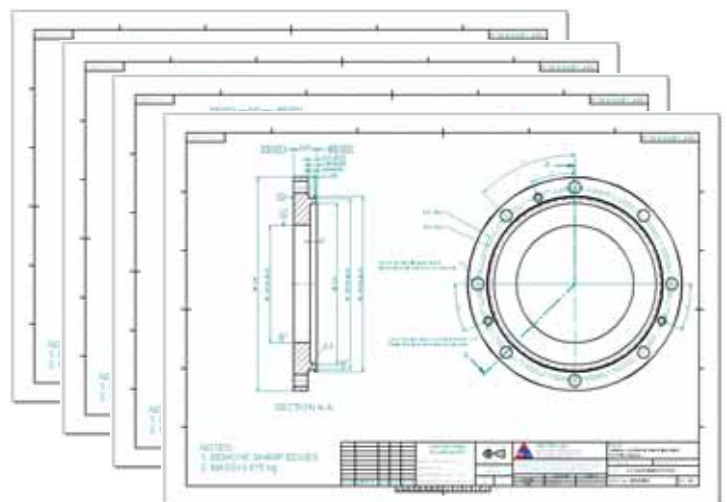
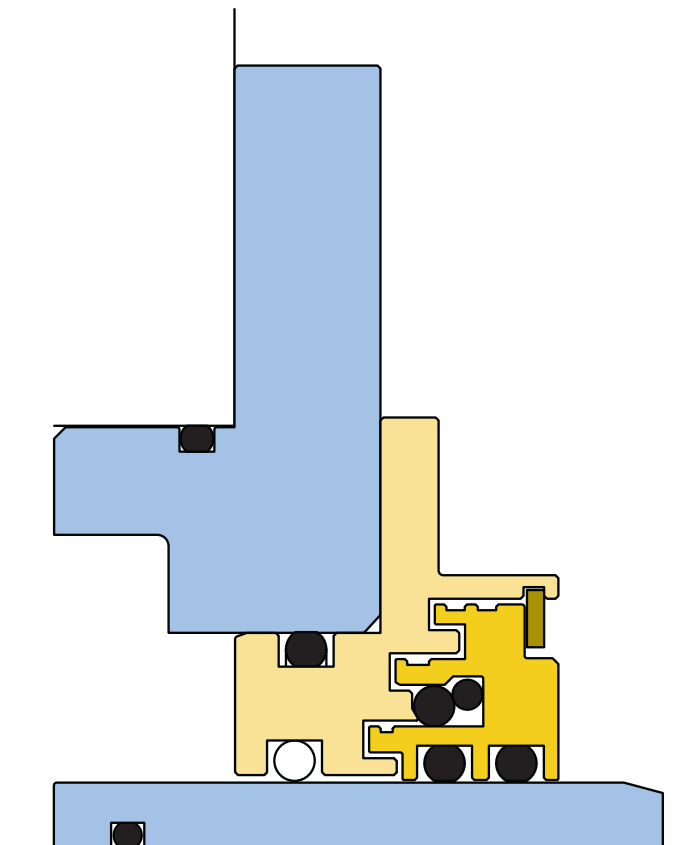


End Cover



Spacer Sleeve

- Full range of end covers and stub shafts available
- Manufactured components or drawing pack can be supplied
- Adjustment screws for easy bearing setting
- Effective 'O' ring Seal
- Robust heavy duty design
- Proven to increase equipment reliability
- For drawing pack order ref: L-WAR-DWG



Full drawing pack contains all drawings to enable stub shafts and end covers to be manufactured locally, offering the customer maximum flexibility and value

Bearing Protection to suit Warman® pumps



| Bearing Assembly | End | Plate Assy Stock Code | Stub Assy Stock Code | Plate/Stub Stock Code | Shaft size (mm) | Hous bore (mm) | LabTecta™ Stock Code |
|------------------|-------|-----------------------|----------------------|-----------------------|-----------------|----------------|----------------------|
| B005M | BOTH | L1-070-02B---WAR/01A | L1-050-01B---WAR/01A | L1-WAR01-B---01 | 50.0 | 70.0 | LAM050PP001WARPM070 |
| C005M | BOTH | L1-086-02C---WAR/01A | L1-060-01C---WAR/01A | L1-WAR02-C---01 | 60.0 | 86.0 | LAM060PP001WARPM086 |
| CC005M | PUMP | L1-086-02CC--WAR/01A | L1-060-01CC--WAR/01A | L1-WAR03-CC--01 | 60.0 | 86.0 | LAM060PP001WARPM086 |
| | DRIVE | L1-086-02CCD-WAR/01A | L1-060-01CCD-WAR/01A | L1-WAR04-CCD-01 | 60.0 | 86.0 | LAM060PP001WARPM086 |
| CAM005M | BOTH | L1-086-02C---WAR/01A | L1-060-01C---WAR/01A | L1-WAR02-C---01 | 60.0 | 86.0 | LAM060PP001WARPM086 |
| CCAM005M | PUMP | L1-086-02CC--WAR/01A | L1-060-01CC--WAR/01A | L1-WAR03-CC--01 | 60.0 | 86.0 | LAM060PP001WARPM086 |
| | DRIVE | L1-086-02CCD-WAR/01A | L1-060-01CCD-WAR/01A | L1-WAR04-CCD-01 | 60.0 | 86.0 | LAM060PP001WARPM086 |
| D005M | BOTH | L1-111-02D---WAR/01A | L1-085-01D---WAR/01A | L1-WAR05-D---01 | 85.0 | 111.0 | LAM085PP001WARFM111 |
| DD005M | PUMP | L1-111-02DD--WAR/01A | L1-085-01DD--WAR/01A | L1-WAR06-DD--01 | 85.0 | 111.0 | LAM085PP001WARFM111 |
| | DRIVE | L1-111-02DDD-WAR/01A | L1-085-01DDD-WAR/01A | L1-WAR07-DDD-01 | 85.0 | 111.0 | LAM085PP001WARFM111 |
| DAM005M | BOTH | L1-111-02D---WAR/01A | L1-085-01D---WAR/01A | L1-WAR05-D---01 | 85.0 | 111.0 | LAM085PP001WARFM111 |
| DDAM005M | PUMP | L1-111-02DD--WAR/01A | L1-085-01DD--WAR/01A | L1-WAR06-DD--01 | 85.0 | 111.0 | LAM085PP001WARFM111 |
| | DRIVE | L1-111-02DDD-WAR/01A | L1-085-01DDD-WAR/01A | L1-WAR07-DDD-01 | 85.0 | 111.0 | LAM085PP001WARFM111 |
| E005M | BOTH | L1-126-02E---WAR/01A | L1-100-01E---WAR/01A | L1-WAR08-E---01 | 100.0 | 126.0 | LAM100PP001WARFM126 |
| EE005M | PUMP | L1-153-02EE--WAR/01A | L1-127-01EE--WAR/01A | L1-WAR09-EE--01 | 127.0 | 153.0 | LAM127PP001WARFM153 |
| | DRIVE | L1-126-02EED-WAR/01A | L1-100-01EED-WAR/01A | L1-WAR10-EED-01 | 100.0 | 126.0 | LAM100PP001WARFM126 |
| EAM005M | BOTH | L1-126-02E---WAR/01A | L1-100-01E---WAR/01A | L1-WAR08-E---01 | 100.0 | 126.0 | LAM100PP001WARFM126 |
| EEAM005M | PUMP | L1-153-02EE--WAR/01A | L1-127-01EE--WAR/01A | L1-WAR09-EE--01 | 127.0 | 153.0 | LAM127PP001WARFM153 |
| | DRIVE | L1-126-02EED-WAR/01A | L1-100-01EED-WAR/01A | L1-WAR10-EED-01 | 100.0 | 126.0 | LAM100PP001WARFM126 |
| F005M | BOTH | L1-158-02F---WAR/01A | L1-127-01F---WAR/01A | L1-WAR11-F---01 | 127.0 | 158.7 | LAM127PP001WARFM158 |
| FF005M | PUMP | L1-176-02FF--WAR/01A | L1-152-01FF--WAR/01A | L1-WAR12-FF--01 | 152.4 | 176.7 | LAM152PP001WARFM176 |
| | DRIVE | L1-176-02FFD-WAR/01A | L1-152-01FFD-WAR/01A | L1-WAR13-FFD-01 | 152.4 | 176.7 | LAM152PP001WARFM176 |
| FAM005M | PUMP | L1-158-02FAM-WAR/01A | L1-127-01FAM-WAR/01A | L1-WAR14-FAM-01 | 127.0 | 158.7 | LAM127PP001WARFM158 |
| | DRIVE | L1-158-02F---WAR/01A | L1-127-01F---WAR/01A | L1-WAR11-F---01 | 127.0 | 158.7 | LAM127PP001WARFM158 |
| FRS005M | PUMP | L1-158-02FRS-WAR/01A | L1-127-01FRS-WAR/01A | L1-WAR15-FRS-01 | 127.0 | 158.7 | LAM127PP001WARFM158 |
| | DRIVE | L1-158-02F---WAR/01A | L1-127-01F---WAR/01A | L1-WAR11-F---01 | 127.0 | 158.7 | LAM127PP001WARFM158 |
| FFAM005M | PUMP | L1-176-02FFAMWAR/01A | L1-152-01FFAMWAR/01A | L1-WAR16-FFAM01 | 152.4 | 176.7 | LAM152PP001WARFM176 |
| | DRIVE | L1-176-02FFD-WAR/01A | L1-152-01FFD-WAR/01A | L1-WAR13-FFD-01 | 152.4 | 176.7 | LAM152PP001WARFM176 |
| FFRS005AMX | PUMP | L1-176-02FFRSWAR/01A | L1-152-01FFRSWAR/01A | L1-WAR17-FFRS01 | 152.4 | 176.7 | LAM152PP001WARFM176 |
| | DRIVE | L1-176-02FFD-WAR/01A | L1-152-01FFD-WAR/01A | L1-WAR13-FFD-01 | 152.4 | 176.7 | LAM152PP001WARFM176 |
| G005M | PUMP | L1-209-02G---WAR/01A | L1-177-01G---WAR/01A | L1-WAR18-G---01 | 177.8 | 209.5 | LAM177PP001WARFM209 |
| | DRIVE | L1-209-02GD--WAR/01A | L1-177-01GD--WAR/01A | L1-WAR19-GD--01 | 177.8 | 209.5 | LAM177PP001WARFM209 |
| GAM005M | PUMP | L1-209-02G---WAR/01A | L1-177-01G---WAR/01A | L1-WAR18-G---01 | 177.8 | 209.5 | LAM177PP001WARFM209 |
| | DRIVE | L1-209-02GD--WAR/01A | L1-177-01GD--WAR/01A | L1-WAR19-GD--01 | 177.8 | 209.5 | LAM177PP001WARFM209 |
| GAM005M-1 | PUMP | L1-209-02GH--WAR/01A | L1-177-01GH--WAR/01A | L1-WAR20-GH--01 | 177.8 | 209.5 | LAM177PP001WARFM209 |
| | DRIVE | L1-209-02GD--WAR/01A | L1-177-01GD--WAR/01A | L1-WAR19-GD--01 | 177.8 | 209.5 | LAM177PP001WARFM209 |
| GP005M | PUMP | L1-209-02G---WAR/01A | L1-177-01G---WAR/01A | L1-WAR18-G---01 | 177.8 | 209.5 | LAM177PP001WARFM209 |
| | DRIVE | L1-209-02GP--WAR/01A | L1-177-01GP--WAR/01A | L1-WAR21-GP--01 | 177.8 | 209.5 | LAM177PP001WARFM209 |
| GG005-2 | PUMP | L1-234-02GG--WAR/01A | L1-203-01GG--WAR/01A | L1-WAR22-GG--01 | 203.2 | 234.8 | LAM203PP001WARFM234 |
| | DRIVE | L1-222-02GGD-WAR/01A | L1-190-01GGD-WAR/01A | L1-WAR23-GGD-01 | 190.5 | 222.2 | LAM190PP001WARFM222 |
| HG005 | PUMP | L1-260-02HG--WAR/01A | L1-228-01HG--WAR/01A | L1-WAR24-HG--01 | 228.6 | 260.3 | LAM228PP001WARFM260 |
| | DRIVE | L1-260-02HG--WAR/01A | L1-228-01HG--WAR/01A | L1-WAR24-HG--01 | 228.6 | 260.3 | LAM228PP001WARFM260 |
| S005M | PUMP | L1-176-02S---WAR/01A | L1-152-01S---WAR/01A | L1-WAR25-S---01 | 152.4 | 176.7 | LAM152PP001WARFM176 |
| | DRIVE | L1-176-02SD--WAR/01A | L1-152-01SD--WAR/01A | L1-WAR26-SD--01 | 152.4 | 176.7 | LAM152PP001WARFM176 |
| T005 | PUMP | L1-222-02T---WAR/01A | L1-190-01T---WAR/01A | L1-WAR27-T---01 | 190.5 | 222.2 | LAM190PP001WARFM222 |
| | DRIVE | L1-222-02TD--WAR/01A | L1-190-01TD--WAR/01A | L1-WAR28-TD--01 | 190.5 | 222.2 | LAM190PP001WARFM222 |

Please verify sleeve and plate dimensions prior to ordering.

THIS DOCUMENT IS DESIGNED TO PROVIDE DIMENSIONAL INFORMATION AND AN INDICATION OF AVAILABILITY. FOR FURTHER INFORMATION AND SAFE OPERATING LIMITS CONTACT OUR TECHNICAL SPECIALISTS AT THE LOCATIONS BELOW.



INVESTOR IN PEOPLE



USE DOUBLE MECHANICAL SEALS WITH HAZARDOUS PRODUCTS. ALWAYS TAKE SAFETY PRECAUTIONS:

- GUARD YOUR EQUIPMENT
- WEAR PROTECTIVE CLOTHING



UK Sales & Technical advice:

AESSEAL plc
Mill Close
Templeborough
Rotherham
S60 1BZ
United Kingdom

Telephone: +44 (0) 1709 369966
Fax: +44 (0) 1709 720788
E-mail: sales@labtecta.com
Internet: http://www.labtecta.com

Distributed by:

Our Purpose: 'To give our customers such exceptional service that they need never consider alternative sources of supply.'

USA Sales & Technical advice:

AESSEAL Inc.
10231 Cogdill Road
Suite 105
Knoxville, TN 37932
USA

Telephone: +1 865 531 0192
Fax: +1 865 531 0571
E-mail: usa@aesseal.com

ALL SIZES ARE SUBJECT TO MANUFACTURING TOLERANCES. WE RESERVE THE RIGHT TO MODIFY SPECIFICATIONS AT ANY TIME.